



# REVIEW OF CURRENT/ONGOING COMMUNITY BENEFITS AND PROCESS

Citizens Advisory Committee Meeting  
December 13, 2018

IMAGINE. DISCOVER. CULTIVATE.



# WESTERN STOCK SHOW ASSOCIATION AND NATIONAL WESTERN STOCK SHOW

Community Partnerships Efforts

# WSSA AND NWSS COMMUNITY PROGRAMS

Funds the Citizens Advisory Committee staffing, planning, printed materials, room cost

Scholarships: 100+ per year and \$500,000 annually. Increased focus on community recipients

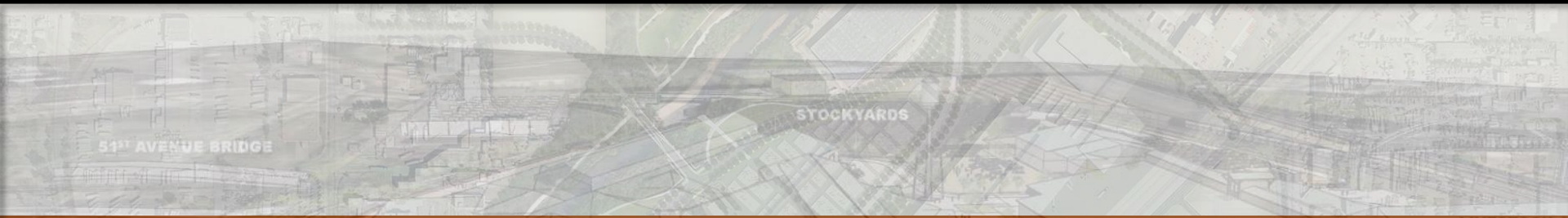
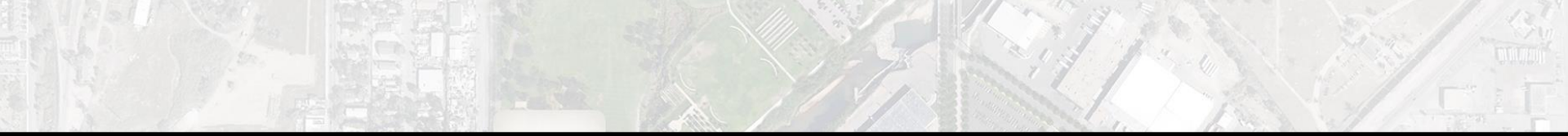
Fall Feast

1000 seasonal job positions

NWSS Education programs:

- Activity Pavilion
- Ag Adventure
- National Western Nursery
- Petting Farm
- Pony Rides
- Pony Trails
- School visits: Hosts over 15,000 students annually.
- Stock Show Tours
- Youth Art Show and Contest
- Catch a Calf
- Wool Fiber Display
- Collegiate Livestock Judging Contest
- Livestock Educational Clinics
- Vet 101





# COLORADO STATE UNIVERSITY COMMUNITY ENGAGEMENT

Listening to community, and working to respond in meaningful ways



## CSU ENGAGEMENT EFFORTS IN GES: 2018 YEAR-IN-REVIEW

- CSU is building partnerships with non-profits, educational institutions, and community members living in the Globeville, Elyria-Swansea (GES) neighborhoods surrounding the location of the future National Western Center as part of the university's long-term commitment to the area.
- The University has **partnerships with 16 non-profits or schools** in the GES area.
- CSU's goal is to enhance existing events and efforts, and to respond to areas of interest and needs as identified by the community.
- CSU attended, provided programming, or support at 33 partner events and hosted nine events in GES during 2018, for a **total of 42 events with CSU presence**.





## BRUCE RANDOLPH SCHOOL

A middle school and high school located in Elyria-Swansea, serving more than 800 students from the communities around Globeville and Elyria-Swansea.

### CSU System partnership outline

- In-classroom connection with AP Civics and AP Human Geography – 2018 school year focus is water
- Pipeline program with a CSU touchpoint each school year
- Annual visit for 8<sup>th</sup> grade to CSU Fort Collins campus
- Personalized connection to Admissions and Access to foster higher education connection
- Youth connection and input mechanisms related to the future National Western Center





## OUTREACH EVENT: FOCUS ON HEALTH

Each year since 2013, CSU Fort Collins has partnered with Focus Points Family Resource Center in the GES community to provide an animal health clinic. Bilingual communication is provided.

### Event overview

- Partners: Dumb Friends League, Clínica Tepeyac, Focus Points Community Center, Bruce Randolph School, COMAL, Metro CAT
- Offered companion animal vaccinations, spay/neuter appointments
- More than 180 animals vaccinated, 35 spay/neuter surgeries performed, and 100 flu shots and health screenings
- Students from BRS volunteered and shadowed students and health professionals





## OUTREACH EVENT: LITTLE SHOP OF PHYSICS AT BRUCE RANDOLPH SCHOOL

As part of CSU's partnership with Bruce Randolph School, CSU's Little Shop of Physics outreach program shared 100 hands-on experiments with 500 students from Bruce Randolph and feeder schools Garden Place Academy and Swansea Elementary.

### Event overview

- Bruce Randolph School juniors (11<sup>th</sup> grade) learned experiments and then helped their younger peers explore
- Garden Place 2<sup>nd</sup> and 4<sup>th</sup> graders attended
- Swansea 3<sup>rd</sup> graders attended
- Bruce Randolph 6<sup>th</sup> and 7<sup>th</sup> graders attended







# 2018 NORTH DENVER CORNERSTONE COLLABORATIVE COMMUNITY PROGRAMS



# COMMUNITY IMPACT: ECONOMIC MOBILITY

*The North Denver Cornerstone Collaborative (NDCC) launched multiple pilots in the neighborhoods of Globeville, Elyria, and Swansea (GES) in 2018 to support the ability of an individual, family, or community to move up on the economic spectrum in terms of wealth and income.*



# ECONOMIC MOBILITY GOALS WITH NDCC

- Creating greater equity in opportunities for communities over multiple generations through interventions in education, health, housing, and labor
- Investing in public programs and resources that develop solutions to stabilize families and individuals

# TARGET AUDIENCE



## **WOMEN**

- 5,812 women reside in GES
- Median age of GES women: 29
- Median household income in GES communities: \$48K



## **YOUTH**

- 43% of GES youth live in poverty
- 74% of GES children not meeting third grade reading standards



## **SMALL BUSINESS**

- 1,450 GES businesses
- 14,972 jobs in GES
- 60% of GES jobs are in the industrial sector

# 2018 NDCC PILOT SERVICES AND PROGRAMS



- *WOMEN WHO LEAD*
- North Denver Resource Center at the Valdez-Perry Branch Library (NDRC)
- Workforce support pilots (e.g. Adelante and WORKNOW)



- CareerResidency and Internships
- Career Online High School Scholarships



- Nonprofit Capacity Mini-Grants
- Digital Business Visibility
- Business Impact Opportunity Fund (BIO Fund)  
*Coming 2019*

# WOMEN WHO LEAD

The North Denver *Women Who Lead* program is a 12-week series focused on providing women living and working in Globeville, Elyria, and Swansea opportunities and knowledge to build leadership and job skills - to engage and lead within their communities, and beyond.



# NORTH DENVER RESOURCE CENTER at VALDEZ-PERRY BRANCH LIBRARY

The NDRC is housed at the Valdez-Perry Branch Library and acts as a central hub where the community has direct access as well as staff to provide dedicated guidance on how to navigate city resources and services from Denver Human Services, the Office of Immigrant and Refugee Affairs, the Office of Financial Empowerment, and Denver Workforce Services and Division of Business Services in the Office of Economic Development.



# WORKFORCE SUPPORT PILOT PROGRAMS

NDCC continues working to maximize the economic benefits of the projects in and around the GES community, including supporting the targeted workforce efforts via WORKNOW including the Elevate Denver projects (e.g. 47<sup>th</sup> and York pedestrian bridge), phases 1 and 2 of the National Western Center capital build program, and the Central 70 project (e.g. Adelante – the housing improvement program to minimize impacts of construction noises and dust on about 250 GES homes).





# CAREER ONLINE HIGH SCHOOL SCHOLARSHIPS

Providing adult learners in the neighborhood the opportunity and resources to complete their high school diploma.



# CareerResidency and INTERNSHIPS

In partnership with Denver Public School's CareerConnects program, the NDCC and the Mayor's Office of the National Western Center (NWCOC) piloted a CareerResidency pathway for five high school students from the community to intern with our agencies over summer 2018. Taking lessons learned from this experience, NDCC and NWCOC will be working to bring students living in the community into a three-year, paid residency program, where upon completion the students could earn a high school diploma, enough college credits towards an associate's degree, a direct pathway for employment and/or postsecondary education.



# NDCC NONPROFIT CAPACITY BUILDING MINI-GRANTS

NDCC awarded 11 nonprofits in 2018 a series of small grants that supported the meaningful and necessary work to deliver strong community benefits; to improve an organization's effectiveness, efficiency, and performance in GES.



# NDCC DIGITAL VISIBILITY MARKETING and SMALL BUSINESS SUPPORTS

One of the main hurdles GES businesses face in exacerbating business disruption and displacement is a lack of modern marketing or connection techniques. NDCC worked with eight GES businesses to establish a digital presence. By meeting these entrepreneurs and residents where they were to find solutions that work for their current realities, this direct service model helped maintain stability and retention of business during a time of serious disruption.



# BUSINESS IMPACT OPPORTUNITY FUND (COMING 2019)

In the spring of 2019, NDCC and the Office of Economic Development (OED), in collaboration with our community partners will be launching the *BIO Fund* aimed to retain, create employment, and further the continuing revitalization of small businesses in the GES area.

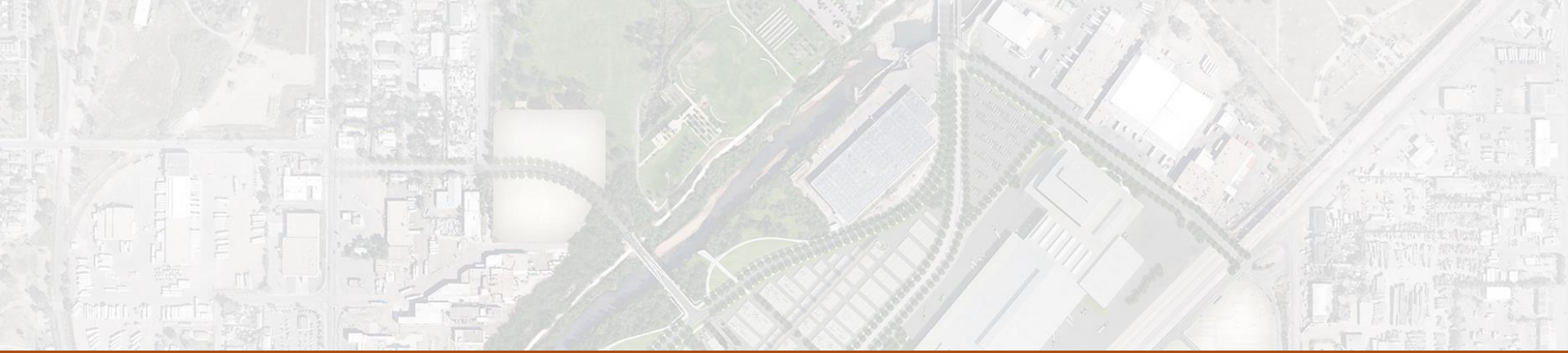


# THANK YOU

*For more information, please visit us at  
<https://www.denvergov.org/ndcc>*



IMAGINE. DISCOVER. CULTIVATE.



# MAYOR'S OFFICE OF THE NATIONAL WESTERN CENTER

Workforce Development



# WORKFORCE DEVELOPMENT @ NWC

The Mayor's Office of National Western Center is committed to ensuring each project includes a robust representation of Small and Minority/Women Business Enterprise (M/WBE).

As the project moves forward, the program team will continue to conduct outreach and cultivate interest and participation on the project through industry forums, presentations, certification information and communication about upcoming contracting opportunities





# WORKFORCE TEAM @ NWC



## Program - Workforce Development

**Karen Nakandakare**

## WORKNOW

**Katrina Wert**

## Hensel Phelps (HIC) – Workforce

**Jocelyn Robinson**

## Program - Business Navigator

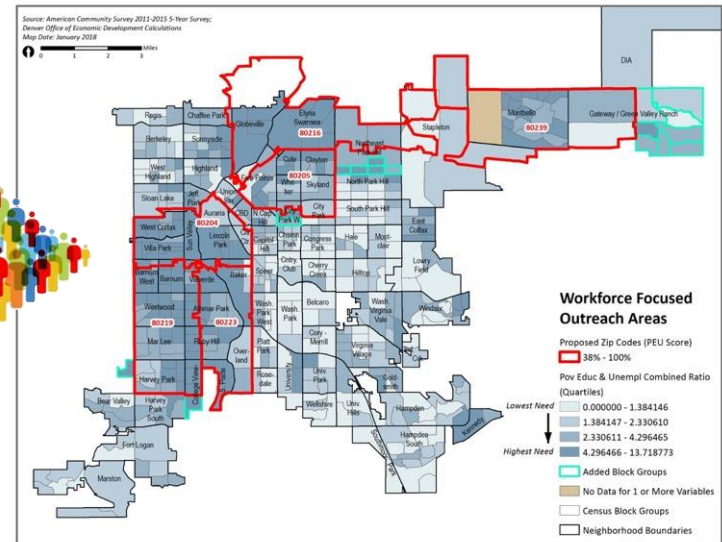
**Suzanne Arkle**



# NWC PILOT WORKFORCE PROGRAM

The National Western Center (NWC) Phase 1 and 2 Capital Build Program is committed to increasing awareness, outreach, training and employment of people from economically disadvantaged areas and populations.

WORKFORCE  
TARGETED  
AREAS



# WORKNOW

## A PROGRAM OF COLORADO RESOURCE PARTNERS

The Mayor's Office of National Western Center is partnered with Colorado Resource (CORE) Partners to create a new approach for helping connect workers to high-paying jobs and family support resources.

The **WORKNOW** program empowers individuals and families who live in communities directly affected by city and state economic development projects to continue to serve the needs of their neighborhood through a job in construction.

**Learn More @ [www.work-now.org](http://www.work-now.org)**



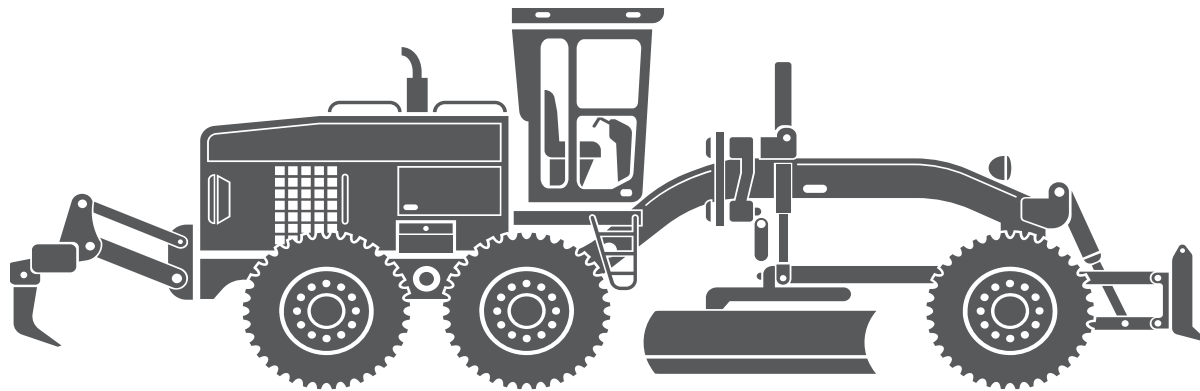
**WORKNOW** programming is concentrated in these key areas:

- Community Resource Navigation
- Job Skills Training
- Job Placement
- Career Coaching & Advancement
- Community Building



# HORIZONTAL INTEGRATED CONTRACTOR (HIC)

The NWC Pilot Workforce Program on the large scale, long-term Horizontal Integrated Contract will offer the opportunity for **testing, measuring outreach and engagement** efforts across numerous construction industry trades and positions.



# HORIZONTAL INTEGRATED CONTRACTOR (HIC) KEY CONTRACT FACTS

INTEGRATED CONTRACT

## Contract Type

- Integrated Construction Contract
- Task Order and Work Order Based

## Contract Capacity

- \$275 Million

## M/WBE

- Goals will be assigned to each Type 2 and Type 3 Work Order

## Contract Duration

- Initial five (5) year duration (2 year possible extension)



# BUSINESS NAVIGATOR

## Strategic Outreach & Communications

- Point of contact for all businesses
- Office hours

## Ombudsman

- Point of contact for M/WBE with any issues or problems

## Supportive Services and Capacity Building

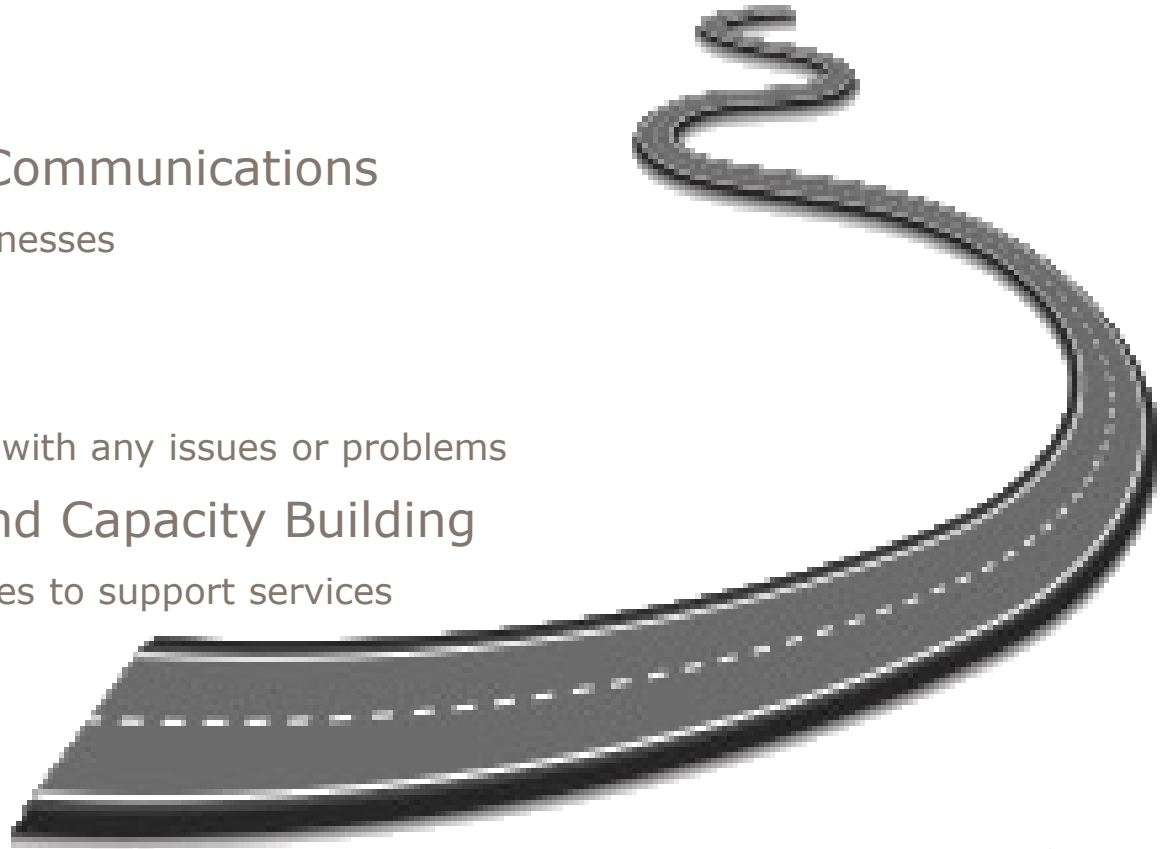
- Refer and connect businesses to support services

### Connect with the Biz Navigator

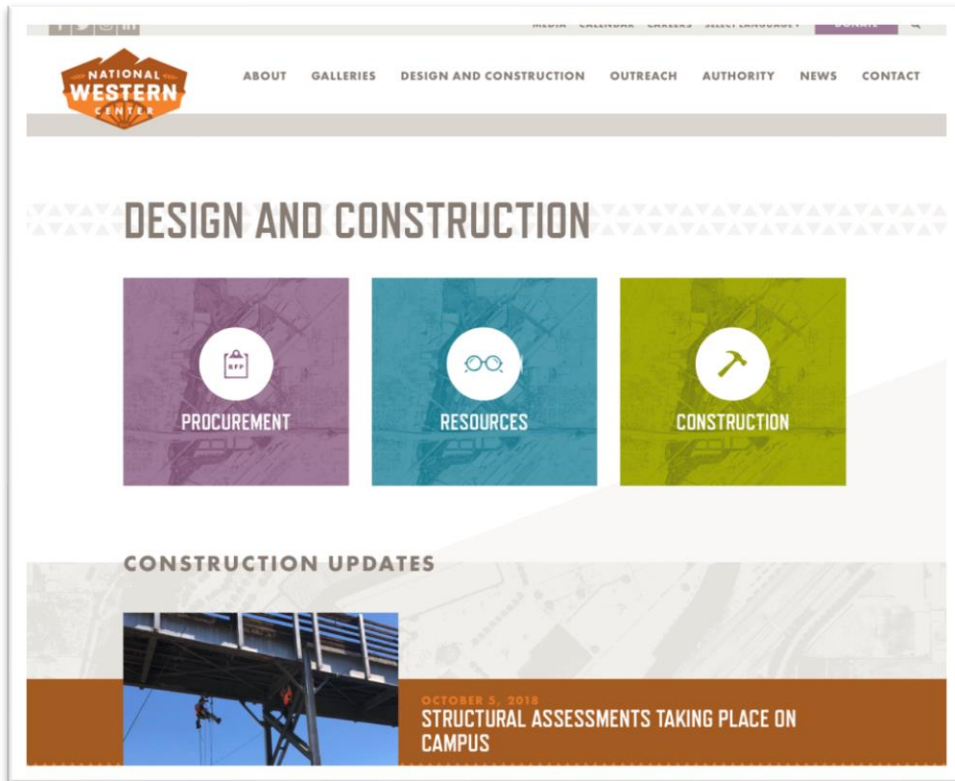
Suzanne Arkle

[suzanne@zanninc.com](mailto:suzanne@zanninc.com)

(312) 543-6317



# STAY CONNECTED TO THE PROGRAM



# AND WE'RE JUST GETTING STARTED! HERE'S WHAT'S NEXT:

## Strategic Implementation Plan Process:

- Work with the communities to explore and define areas for partnerships with NWCA and NWC partners
- Create consensus on timeline for process
- Inform future Community Benefits Pact

## Explore process to create fiscal agent for Community Investment and Partnership:

- Explore best practices
- Craft the right process
- Create governance structure
- Maintain independence and ability to work with a wide variety of partners and contributors







# Thank you!



[www.nationalwestern.com](http://www.nationalwestern.com)

# COMMUNITY BENEFITS COMMITTEE MISSION STATEMENT

The mission of the Community Benefits Committee established by the National Western Center Authority Board is to make thoughtful and practical recommendations to the board which make economic development of the National Western Center accountable and responsive to community needs and opportunities represented by the residents, businesses, organizations, schools, churches, and faith groups in the historic and unique neighborhoods of Swansea, Elyria, and Globeville, which face challenges. Such needs are to be identified through a process which is fair, equitable, inclusive, democratic, and sustainable over time. These recommendations must give credence to the benefits received from these neighborhoods and the financial support for the National Western Center from the City and County of Denver and the State of Colorado.

